



رشد و تکامل حرکتی

دانشگاه پیام نور

# Mitosis

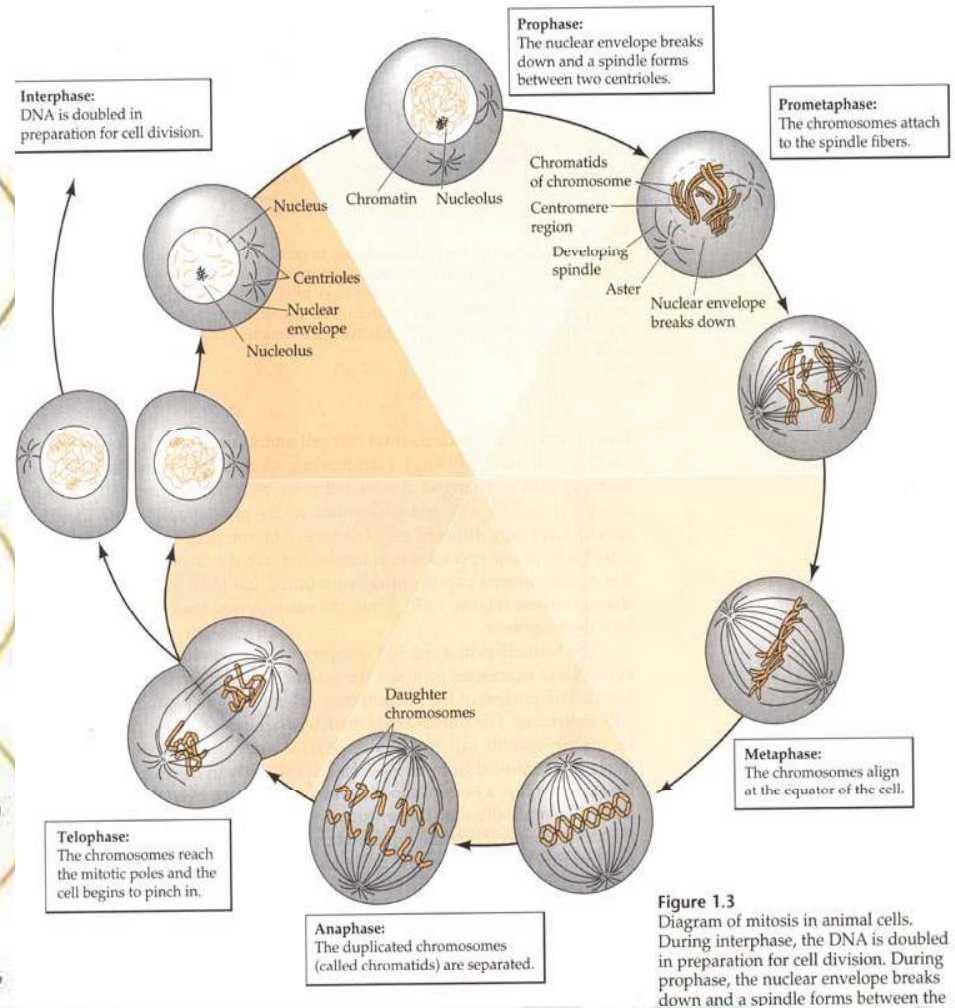
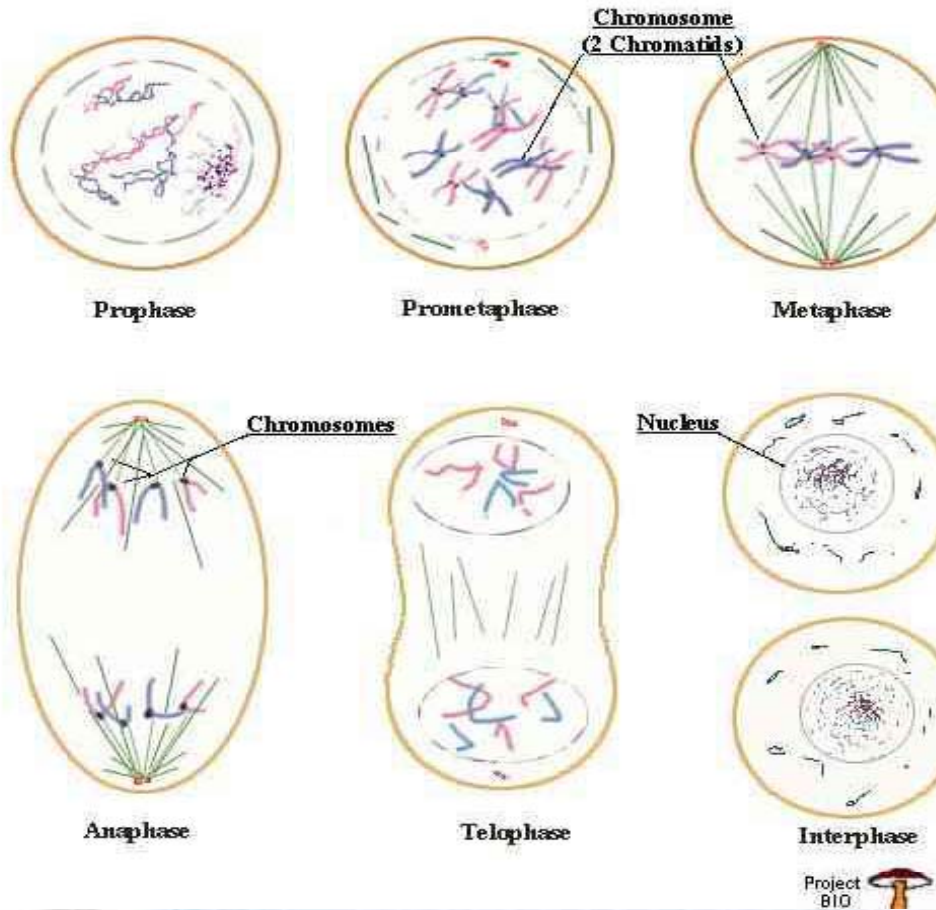
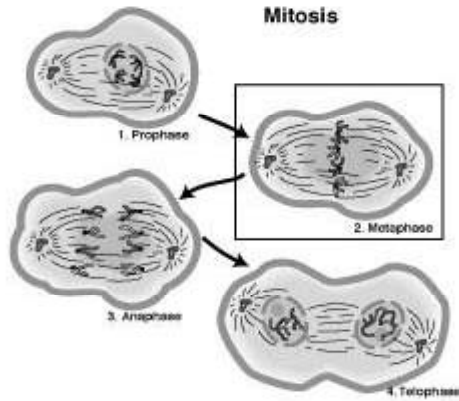


Figure 1.3 Diagram of mitosis in animal cells. During interphase, the DNA is doubled in preparation for cell division. During prophase, the nuclear envelope breaks down and a spindle forms between the

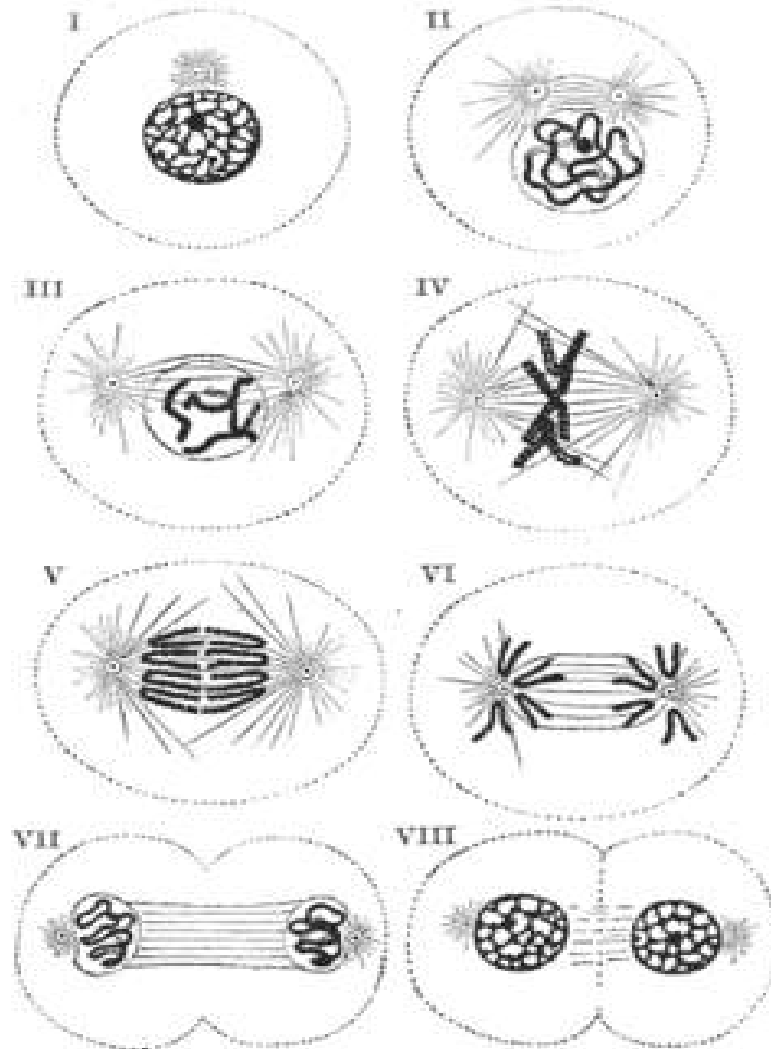
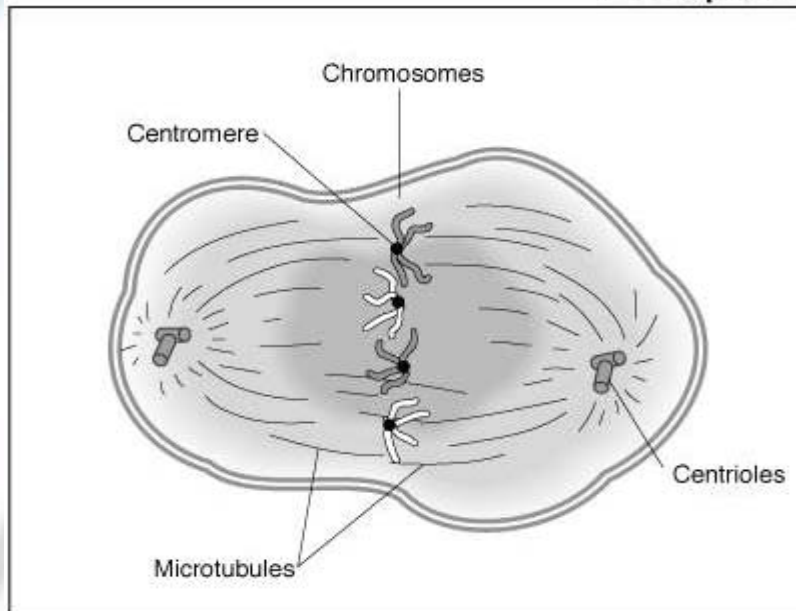
WWW.PNUUNA.COM

time management

دکتر محمد رضا اسد عضو هیئت علمی دانشگاه پیام نور



**2. Metaphase**





■ ۳- سارکومر **sarcomere**

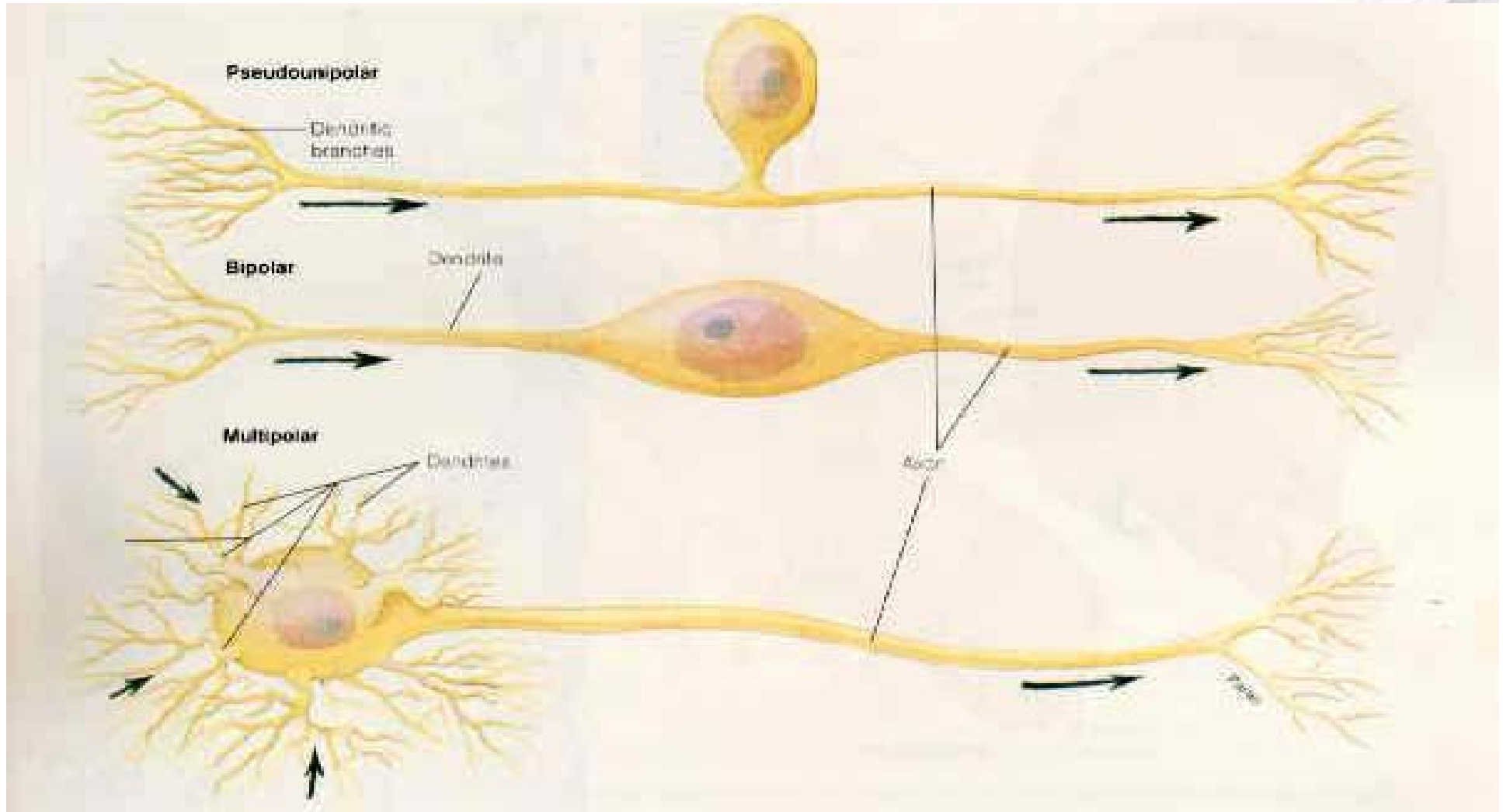
به فاصله متوالی دو خط z در تار عضله گفته می شود.

■ ۴- دندریت **dendrite**

انشعابات کوتاه سلول عصبی

➤ ۵- آکسون **axon**

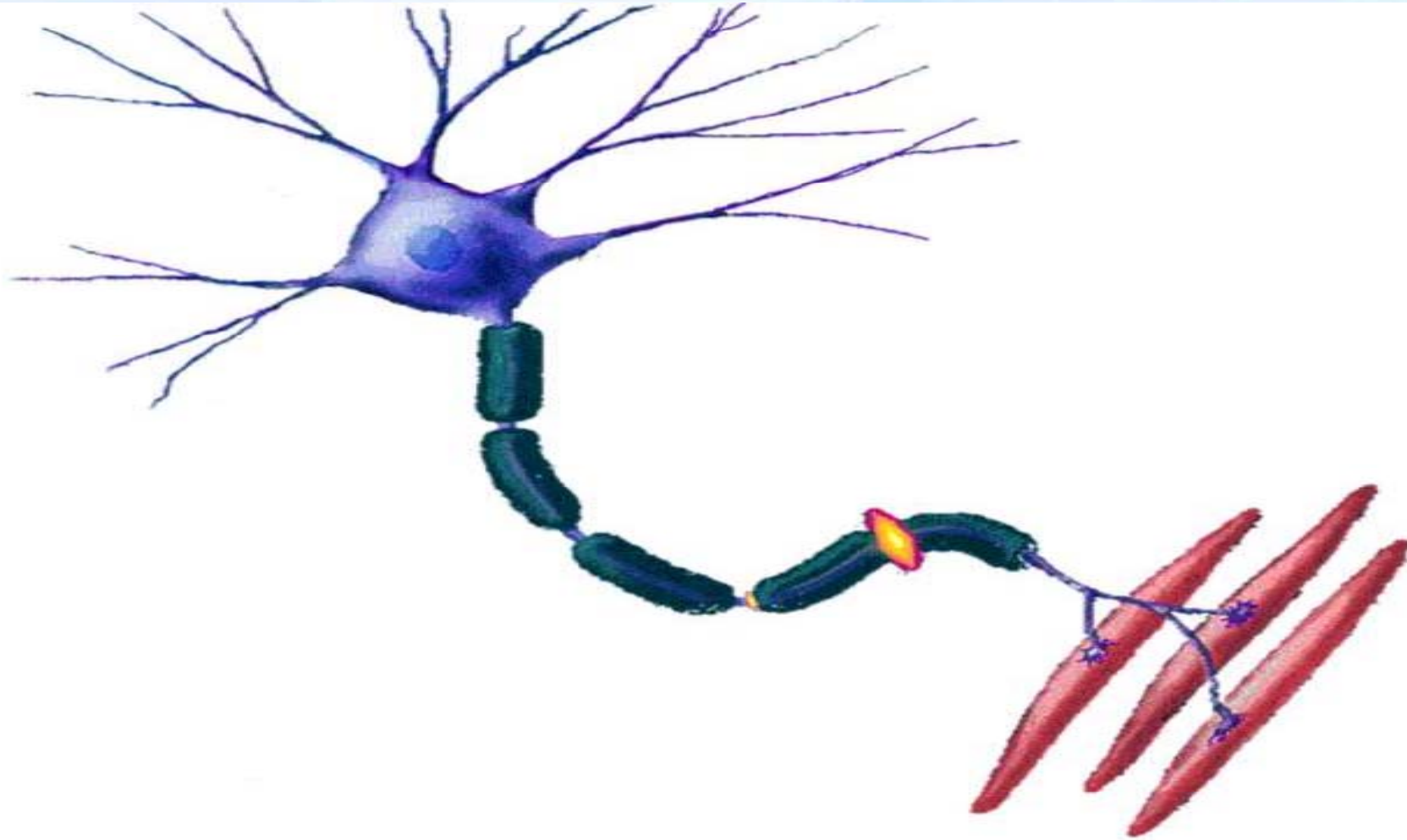
انشعابات بزرگ سلول عصبی





رشد و تکامل حرکتی

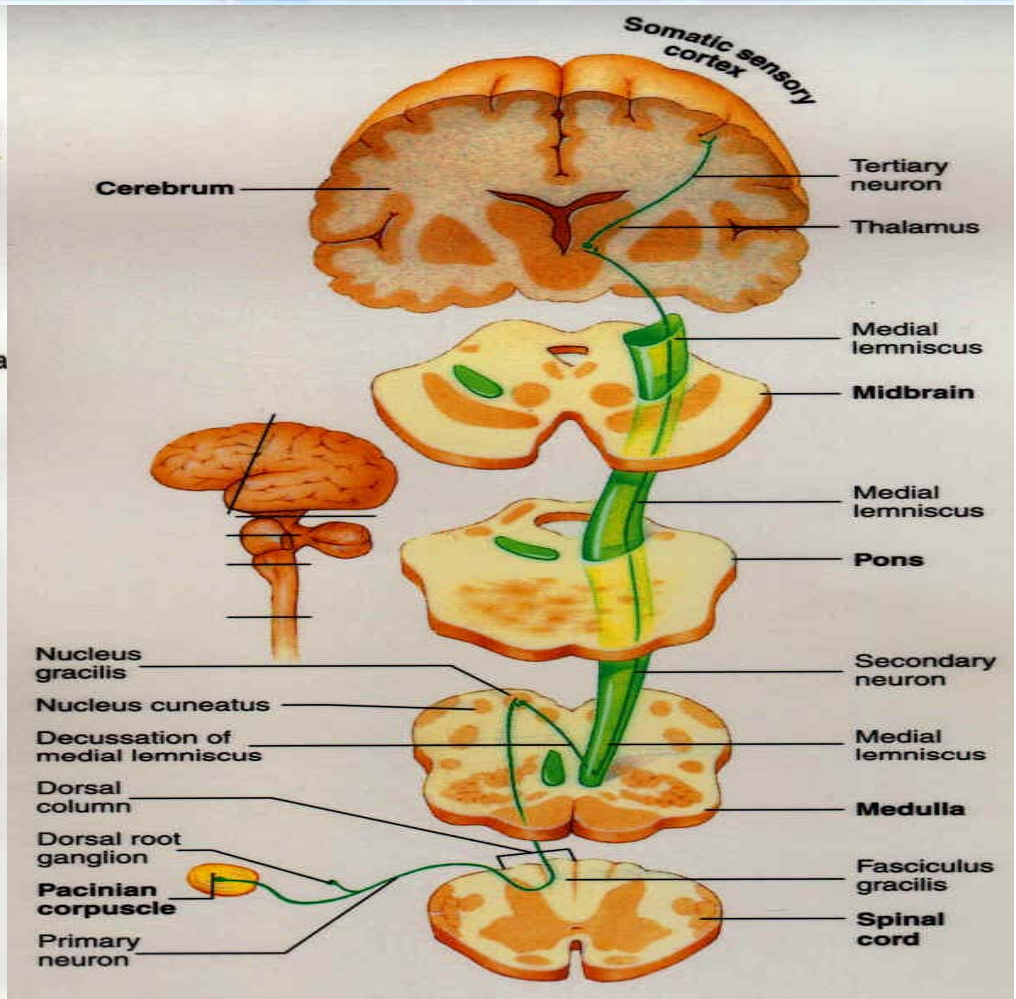
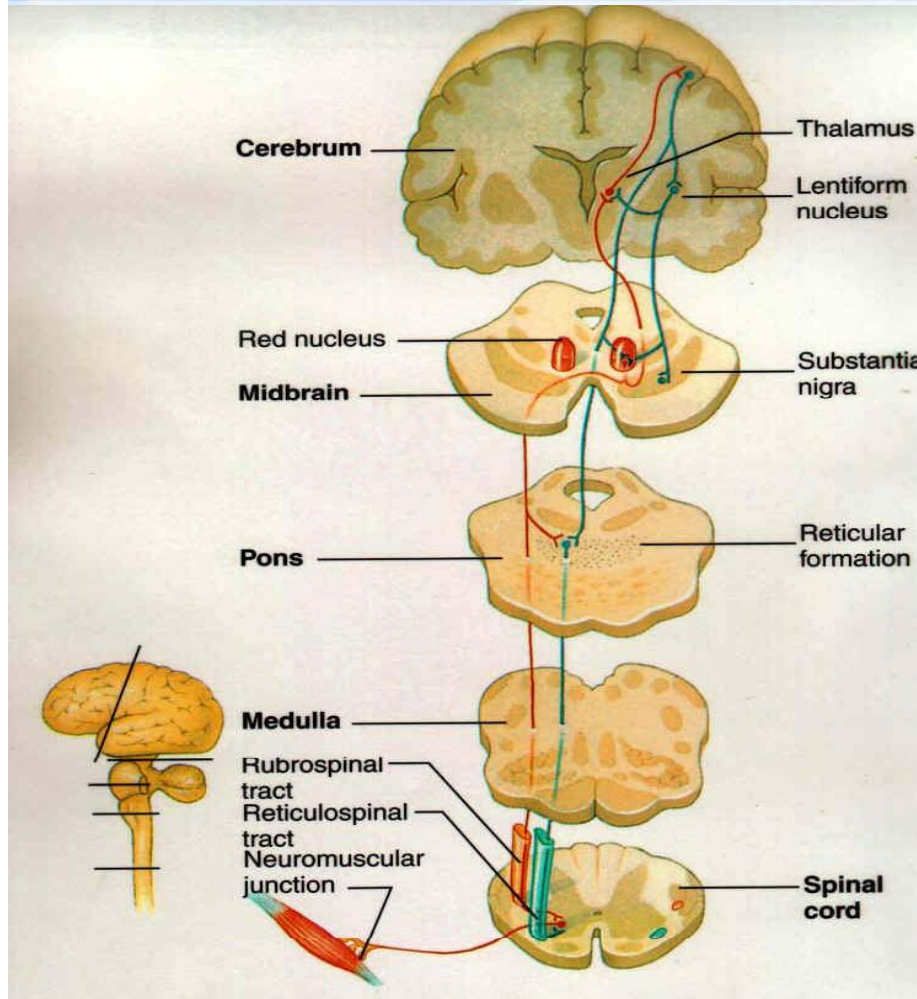
دانشگاه پیام نور

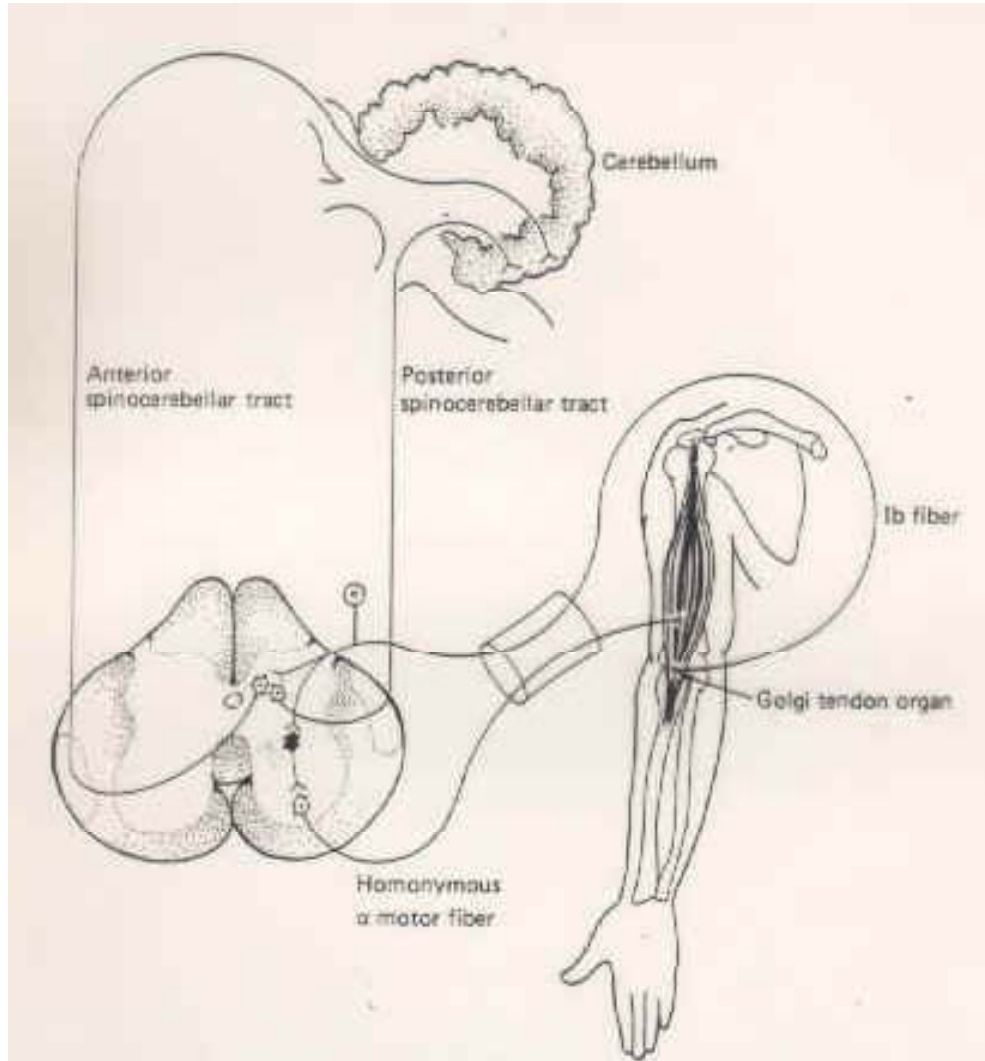


WWW.PNU.NA.COM

time management

دکتر محمد رضا اسد عضو هیئت علمی دانشگاه پیام نور





1. During the withdrawal reflex, afferent neurons conduct action potentials to the spinal cord.
2. Afferent neurons synapse with excitatory association neurons that are part of the withdrawal reflex. Collateral branches also synapse with excitatory association neurons that cross over to the opposite side of the spinal cord as part of the crossed extensor reflex.
3. Stimulation of the alpha motor neurons supplying extensor muscles on the opposite limb causes them to contract and support body weight during the withdrawal reflex.

